

# HUNTERS®

HERE TO GET *you* THERE



## North End, Flamborough, YO15 £750 Per Month

Council Tax:

Tenure:

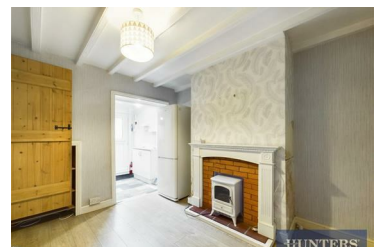


Nestled on North End in the charming village of Flamborough, this delightful two-bedroom cottage offers the perfect blend of character and comfort. Ideal for couples, small families, or anyone seeking a peaceful coastal lifestyle, this property boasts traditional charm and modern convenience.

The cottage features two bedrooms, a welcoming living room, a separate dining room and a compact but practical kitchen. The bathroom includes a shower over the bath for added convenience. To the rear, a versatile workshop offers ample space for hobbies or storage while the garden provides a lovely outdoor retreat.

### About Flamborough

Flamborough is a quintessential Yorkshire village surrounded by breathtaking coastal scenery, including the iconic Flamborough Head, with its



27 Quay Road, Bridlington, YO15 2AR  
Tel: 01262 674252 Email: [bridlingtonlettings@hunters.com](mailto:bridlingtonlettings@hunters.com)  
<https://www.hunters.com>

